

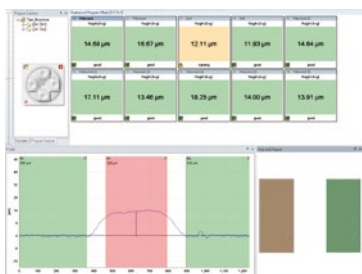
# ASCAN 8

## AUTOMATIC PROFILE AND 3D MEASUREMENT SOFTWARE

ASCAN 8 is a software package for creating automated 2D profile and 3D raster measurement routines. This allows the cyberTECHNOLOGIES VANTAGE and CT SERIES to be used in production. Measurement data are collected fast and without user interference for maximum repeatability.

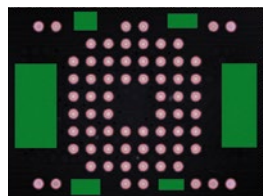
### AUTOMATED MEASUREMENT PROGRAMS

- Easy to use menu based software tool
- No programming skills required
- Automated data analysis without user interference
- Ideal for use in production or laboratory



ASCAN user interface with results and data review

Multiple results per position, switch between box view and table view.

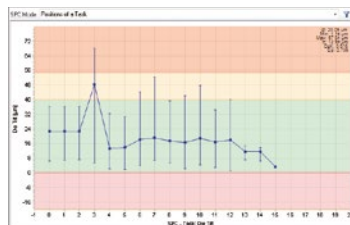


Measurement of height max and diameter of bumps

Task No.	Height	Diameter	Status
Set No. 1	14.88 µm	18.67 µm	good
Set No. 2	12.11 µm	11.83 µm	good
Set No. 3	17.11 µm	13.46 µm	good
Set No. 4	18.25 µm	14.00 µm	good
Set No. 5	13.91 µm	13.91 µm	good
Set No. 6	14.88 µm	18.67 µm	good
Set No. 7	12.11 µm	11.83 µm	good
Set No. 8	17.11 µm	13.46 µm	good
Set No. 9	18.25 µm	14.00 µm	good
Set No. 10	13.91 µm	13.91 µm	good

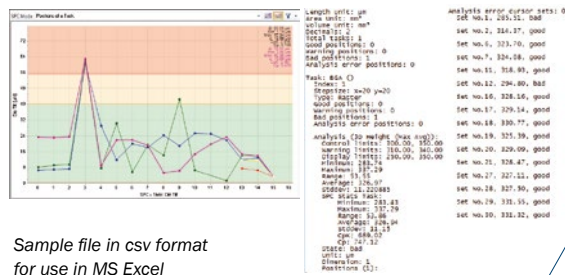
### INTEGRATED SPC AND DATA LOGGING

- Define warning and failure limits
- Clear Good / Bad / Warning indication
- View X-bar / R SPC graphs
- Print report function with charts
- Advanced statistics



X-bar / R Chart with cp and cpk values

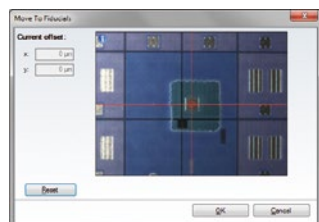
Flexible data output via file or web-service for easy integration into existing CAQ software



Sample file in csv format for use in MS Excel

### FIDUCIAL CORRECTION

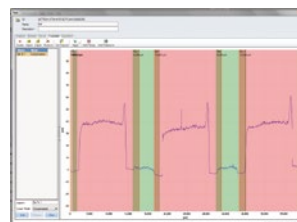
- Part offset and rotation compensation
- Manual and automatic mode
- Scan definitions follow part rotation



Live video and calibrated crosshair on a hybrid circuit

### 2D PROFILE TASK

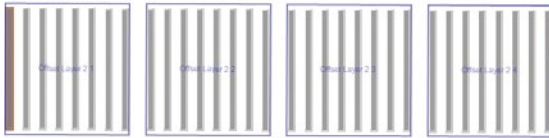
- Define analysis and scan setting
- Save task to database and update from database
- 2D edge detection with or without template



2D task template with search areas for 2D edge detection

### STEP AND REPEAT

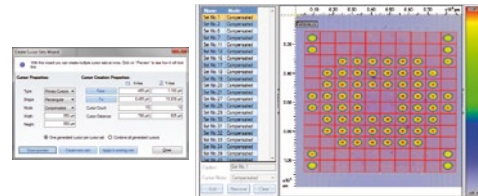
- Easy program setup using step and repeat
- Designer for multiple levels
- Activate / deactivate individual offsets



Step and repeat preview of a semiconductor package

### 3D RASTER TASK

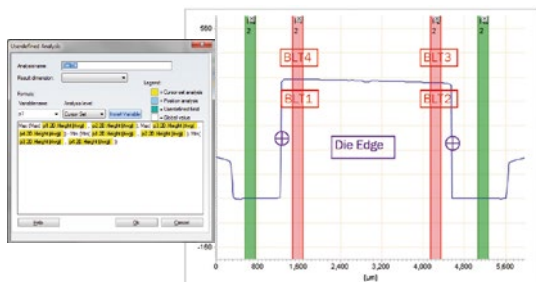
- Multiple cursor sets per scan
- 3D edge detection and correlation algorithm
- Template fiducial for easy position teach-in



3D task template with multiple cursor sets

### VIRTUAL TASK

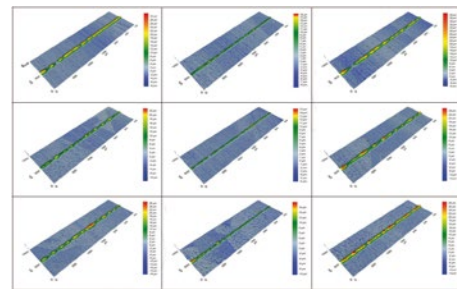
- Use virtual task to link existing results
- Create custom design analysis
- Easy to use mathematical editor function



Calculation of die tilt in a virtual task

### SPECIAL SETTINGS

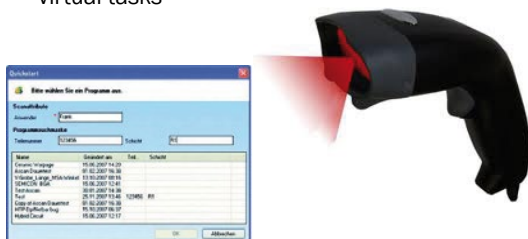
- Output surface maps and contours automatically
- Integrated user management
- Enter comments in SPC data



3D images of 9 positions on a solar cell

### USER FIELDS

- User field entries before or after program start or at defined conditions
- Accepts bar code or data matrix entries
- Automatic program search
- Filter SPC data based on user fields
- Data traceability
- Enter numeric values for calculations in virtual tasks



Quick start menu with user field entries

### SUMMARY

#### ASCAN HIGHLIGHTS:

- Software tool for measuring 2D profiles and 3D raster automatically
- Easy to use, menu based software, no programming skills required
- 2D and 3D edge detection algorithms
- Clear good, bad and warning indication
- Built-in SPC charts with reporting function
- Easy programming using tasks and templates
- Integrated database for tasks
- Offset and fiducial correction
- Table view for multiple results
- Flexible, user defined data output format
- Barcode or user field input
- Step & Repeat function
- Plug-Ins for customized software solutions